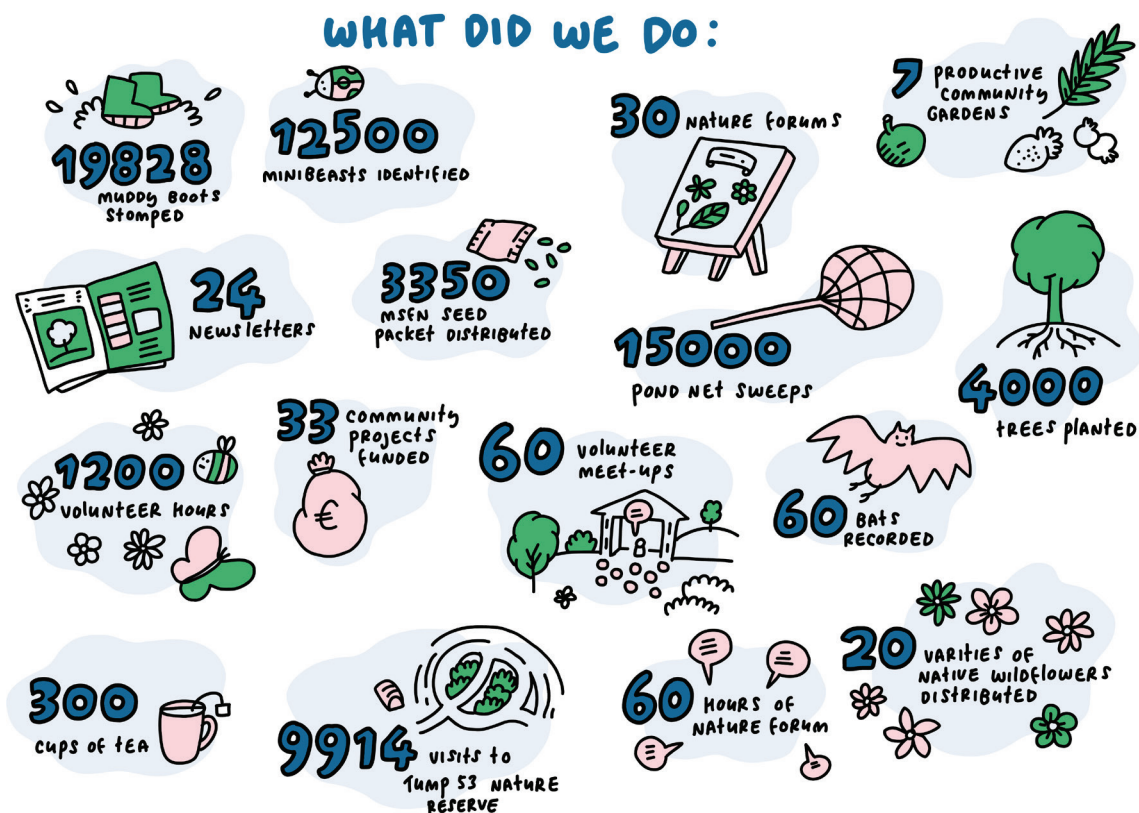


Engaging people in nature-based activities: Raising awareness of the value and benefits of nature in cities

In 2018, the CLEVER Cities London team created a public facing programme called *Making Space for Nature*. The programme was initially focussed on South Thamesmead, but it was soon expanded to encapsulate all activities and communication where the intention was for Peabody and

partners to help connect people in Thamesmead with nature, wildlife and the landscape.

A selection of the activities and impacts over 5 years are summarized in the infographic below and outlined in more detail in this brief.



This project has received funding from the European Union's Horizon 2020 innovation action programme under grant agreement No 776604. The sole responsibility for the content of this website lies with the CLEVER Cities project and in no way reflects the views of the European Union.



Tiny forest in Southmere Park

The **Tiny Forest** in Southmere Park was planted in January 2023 at a planting event attended by approximately 80 people. It's a fast-growing, dense woodland made up of 600 trees in a space the size of a tennis court. The project was delivered by Earthwatch Europe who help to determine the location of the site, the make up of the trees/ shrubs and who delivered a public planting day and subsequent citizen science days. Interest in this project for CLEVER

Cities was in the creation of a team of local 'Tree Keepers' who help design the forest and maintain the space after it's planted. Initially 8 volunteers signed up and were supported by Earthwatch with some training and resources. The site has been visited by local schools, community groups and people using the park since it was planted to monitor the growth of the trees and the impact for the park in terms of biodiversity.

Wildlife and Welly Walks

Wildlife & Welly Walks have been offered free at the point of contact to 8 classes of 32 students at 4 Thamesmead Primary Schools. Priority schools were identified by Peabody Thamesmead Socio-economic team and given first refusal for the programme. We worked with delivery partner North West Kent Countryside Partnership who planned and delivered 4 afternoon activities for a class of students to attend together. Students had a classroom session, looking at maps of the local area and identifying where they might like to plan a walk. The second session involved walking the route and litter picking and identifying areas for improvement (for people and nature). The third walk involved improving biodiversity either with planting seeds or bulbs and the

fourth walk involved leaving something behind to improve habitat – either bird boxes, hedgehog homes or log piles.





Tump 53 Education Programme

The Tump 53 Education Programme has operated from a Nature Reserve in Thamesmead. We work with approximately 2,500 local people each year ranging from Nursery and parent/toddler groups through to post-graduate students learning how to deliver outdoor education activities themselves. The activities are all centred around providing opportunity for nature

connection and personal development. Visitors take part in activities such as pond dipping, fire lighting, shelter building, invertebrate study, storytelling, orienteering and team building exercises. The upkeep of the woodland and classroom is funded by Peabody and the cost of a tutor to deliver the lesson and any resources used is covered by schools, or parents/ guardians.

Seed packets

Seed Packets have been used as a mass giveaway item at multiple events and activities throughout the year. We use a supplier who is able to package up small quantities of any seed that we request including sunflowers, pumpkins, parsley, coriander and cornflowers. The most popular packets have been the native wildflowers. The packets are well received and help initiate conversations about where people live, where they might sow them and where they have seen similar species before. We have given away approximately 3,000 seed packets. The packets are designed with Making Space for Nature illustrations and colour scheme, they contain a short blurb about the programme and details for how people can find out more or get involved.





Posters, banners and illustrations

A set of **designed poster and banner templates, and suite of illustrations** were created through commission by a local graphic designer and artist. The assets were accompanied by a simple handbook which meant the pack could be shared with any external partner delivering and communicating work under the Making Space for Nature Programme. The banners and posters stand out at events and on community noticeboards and have helped to show the breadth of the programme. The assets highlighted and included landmarks and infrastructure unique to Thamesmead including the many 'Tump' walls, the clocktower and distinctive Moorings Sociable Club.

